



# **A PLACE TO STUDY**

**Brno University of Technology**

# **A PLACE TO STUDY**

**Brno University  
of Technology**

# Content

## BEFORE YOU ARRIVE

- 1.0 Why study in the Czech Republic?
- 1.1 Fees and costs
- 1.2 How to apply to BUT
- 1.3 Visa and residence permit

## FIRST STEPS IN BRNO

- 2.0 Getting to Brno
- 2.1 Public transport
- 2.2 Health insurance
- 2.3 Opening a bank account
- 2.4 Czech language courses

## STUDY AT BUT

- 3.0 Accommodation
- 3.1 Scholarships and financial aid
- 3.2 Student cards
- 3.3 Student associations
- 3.4 Student with special needs
- 3.5 International Student Ambassadors

## LIFE IN BRNO

- 4.0 City of Brno
- 4.1 Cost of living in Brno
- 4.2 Work in Brno during studies



# Before you arrive





# Why study in the Czech Republic?



## Safe and welcoming country

The Czech Republic, home to the oldest university in Central Europe, welcomes around 35,000 internationals each year thanks to the increasing number of English-taught degrees, inexpensive tuition fees, low living costs as well as safety and charm of the country.



## High-ranked universities

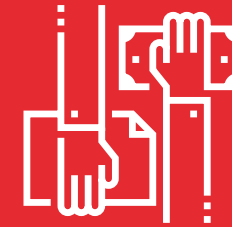
Some of the world's top-ranked universities can be found in the Czech Republic, and the Brno University of Technology is proud to be one of them:

- [Brno University of Technology](#)
- [Charles University](#)
- [Masaryk University](#)



## Low living costs

Living costs in the Czech Republic are lower when compared to most countries in Western Europe. On average, students spend between 315 and 675 EUR/month, which includes accommodation, food, transportation and social activities.



## Small or no tuition fees

The yearly tuition fees for English-taught degrees in public universities usually range between EUR 0 and 20,000. The fees may be higher in private universities.

If you're very good at Czech, you can study for free in public universities, because degrees taught in Czech are free of charge regardless of your nationality.

# Fees and costs

## Admission fees

Once you've filed and submitted an [electronic application](#), you'll need to pay a validation fee of **EUR 30**.

A certificate of recognition ("nostrifikační dolož- ka" in Czech) is usually necessary to validate foreign education and qualifications. If you don't have a certificate of recognition, you can request the assessment of education compatibility at a fee of **EUR 32**.

## Tuition fees

Czech-taught degrees are **free of charge** regardless of your nationality!

Even if you choose an English-taught study programme, **the tuition fees are affordable, ranging between EUR 1,000 and 9,000 per year**. The exact amount depends on the study programme.

You can see the specific amounts of fees for individual study programs [here](#).





# How to apply to BUT

## Faculty of Civil Engineering

[Bachelor's studies](#) / [Master's studies](#) / [Doctoral studies](#)

## Faculty of Mechanical Engineering

[Bachelor's studies](#) / [Master's studies](#) / [Doctoral studies](#)

## Faculty of Electrical Engineering and Communication

[Bachelor's studies](#) / [Master's studies](#) / [Doctoral studies](#)

## Faculty of Architecture

[Master's studies](#)

## Faculty of Information Technology

[Master's studies](#) / [Doctoral studies](#)

## Faculty of Chemistry

[Doctoral studies](#)

## Faculty of Business and Management

[Bachelor's studies](#) / [Master's studies](#) / [Doctoral studies](#)

## Central European Institute of Technology

[Doctoral studies](#)

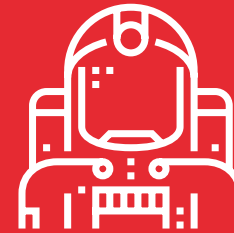


### Step 1

#### Choose study programme

Admission procedures may vary depending on the chosen BUT faculty and study programme.

Check the faculty website for more information. **Please note that most applications will be open on December 1.**



### Step 2

#### Submit electronic application

After choosing your programme, fill in an [electronic application](#) on the university website.

Please make sure that you're familiar with the admission criteria (entrance exam, required education, etc.) and that you've managed to get all the necessary documents.

For a **bachelor's programme**, you'll typically need a certificate of secondary education, and a [certificate of recognition](#) is also necessary. For a **master's programme**, you'll need a certified copy of your bachelor diploma. More information about the recognition and assessment of foreign education can be found [here](#). You may also be asked to prove your English language competence.

Check your faculty website to find all the necessary information and the criteria that apply to you.

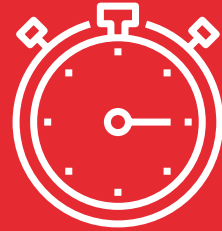


### Step 3

#### Pass entrance exam (if required)

You might be invited to sit an entrance exam. They are usually held from May to June or July unless the faculty determines otherwise. Entrance exams are usually held on the university campus, but some programmes might allow taking the exam from abroad, e.g. by conducting an interview through Skype. Detailed information on the entrance exam is published on your faculty website. If in doubt, contact the faculty's Study Department.

# Visa and residence permit



## Non-EU/EEA students

If you're from another country, you'll probably need a student visa to study in the Czech Republic. Which means another round of paperwork for you. But don't worry, it's the last one!

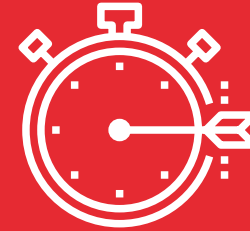
## EU/EEA students

If you're an EU citizen or a citizen of Norway, Lichtenstein, Switzerland or Iceland, you **won't need any visa or residence permit**.

## Stay of up to 90 days

If you plan to stay for less than 90 days, you'll need a **short-term visa**.

Citizens of some countries are exempt from the short-term visa requirement, which means you may not need visa at all. Your application will be processed within 15 days.



## Stay of over 90 days

If you plan to stay for more than 90 days, you'll need a **long-term visa for the purpose of studies**. An application for this visa can be filed at a Czech embassy abroad.

A long-term visa for the purpose of studies is issued for a period specified in the confirmation of studies, but **for no longer than 1 year**.

In order to apply, you'll need a **travel document**, a **proof of accommodation**, a **Letter of Acceptance** from BUT, a **proof of funds**, and **2 photographs**. You may be asked to submit other documents, such as your **penal register record**. Please make sure to apply for your visa well in advance, because the issuance may take some time.



## Stay of over 1 year

If you plan to stay for longer than 1 year, you'll need a **long-term residence permit for the purpose of studies**. An application for this permit can be filed at a Czech embassy abroad.

A long-term residence permit for the purpose of studies is intended for foreigners who will study in the Czech Republic for a period longer than 3 months in a study programme longer than 1 year. The validity of this permit can be repeatedly extended, but by no longer than 2 years.

In order to apply, you'll need a **travel document**, a **proof of accommodation**, a **document confirming the purpose of your stay in the Czech Republic**, a **proof of funds**, and **2 photographs**. You may be asked to submit other documents, such as your **penal register record**. Your application will be processed within 60 days.

# Student Mode

The Student Mode project aims to facilitate the visa procedure for the students from selected countries who are admitted to study at a Czech university. The purpose of the Student Mode is to accelerate access to the relevant embassy for an applicant seeking a long-term visa or residence permit for the purpose of studies. Please note that placing an applicant on the list doesn't automatically guarantee their visa application will be successful.

Contact  
 tereza.formackova@vut.cz for more information.

## How to get a Student Mode nomination?

If you want to be nominated, contact your faculty coordinator for **short-term studies or degree studies in English or Czech**.

## What should I do when I have been accepted?

Prepare all the documents necessary for submitting your application at the Czech embassy.

Wait for an e-mail or call from the Czech embassy.

**Please note:** If you do not submit all the required documents, you will be automatically removed from the Student Mode.

The Student Mode covers the following countries.

Countries in which the embassy is located and provide the Student mode:	Other countries that fall within the consular competence of these embassies and whose citizens can be included in the Student mode:
Federal Republic of Nigeria	Republic of Benin Republic of Chad Republic of Cameroon Republic of Equatorial Guinea Democratic Republic of the Congo Republic of the Congo Gabonese Republic Central African Republic
Socialist Republic of Vietnam	
Republic of the Philippines	
Republic of Serbia	Montenegro
Islamic Republic of Iran	
Republic of Uzbekistan	Republic of Tajikistan Republic of Turkmenistan
Republic of Ghana	Burkina Faso Republic of the Gambia Republic of Guinea Republic of Guinea-Bissau Republic of Liberia Republic of Côte d'Ivoire Republic of Sierra Leone Togolese Republic
Republic of Turkey	
Republic of Kazakhstan	
Republic of India	People's Republic of Bangladesh Republic of Maldives Nepal Democratic Socialist Republic of Sri Lanka Kingdom of Bhutan
Russian Federation	
Ukraine	



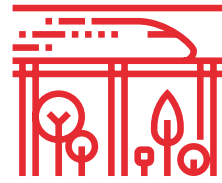
An aerial photograph of the Brno Castle complex in the Czech Republic. The castle features white buildings with red-tiled roofs and is surrounded by a stone wall. The foreground is filled with lush green trees, some showing autumnal colors. The background shows a dense urban landscape of Brno. The image is decorated with several large, semi-transparent geometric shapes in bright colors: a blue arrow pointing right, a red square, a pink square, a blue square, and a yellow square.

# → First steps in Brno



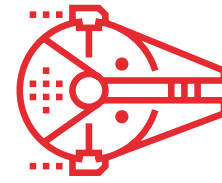
# Getting to Brno

Being the second largest city of the Czech Republic, Brno is an important regional centre, and it is also easily accessible due to its location in the heart of Europe.



## By train

Brno is an important rail junction situated on the Balkan – Budapest – Prague – Berlin – Scandinavia rail route. All EuroCity trains stop in Brno. The distance from Prague to Brno is 256 kilometres, from Vienna 155 kilometres, from Bratislava 132 kilometres, from Berlin 566 kilometres and from Wrocław 312 kilometres. The main railway station is located in the centre of Brno. You can search for train, bus and public transport connections at [IDOS](#). Train tickets can be bought online at the [website of České dráhy](#). The private companies [RegioJet](#) and [Leo Express](#) operate trains from Prague and Vienna to Brno.



## By plane

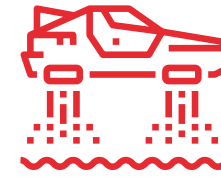
The **Brno-Tuřany international airport** is regularly served by flights from London-Stansted and Milan-Bergamo. There are many seasonal flights to and from the Greek islands, Egypt, Spain, Turkey and Bulgaria.

In order to get to the main railway station ("Brno – hlavní nádraží" in Czech) or the central bus station ("Brno Zvonařka"), take the bus number **E76**, which leaves the airport every 30 minutes, or **N89**, the night bus operating between 11 p.m. and 5 a.m. and running every hour. The journey takes around 20 minutes. Check [BRNO Airport](#) for more information.

Apart from Brno-Tuřany, the Václav Havel Airport in **Prague**, the **Vienna** International Airport and the **Bratislava** Airport are your most convenient options. You might want to check [Kiwi](#) or other search engines for cheap flights.

The Vienna Airport bus stop is located in walking distance from the arrival hall, and some buses (e.g. **RegioJet** or **FlixBus** buses) will take you right to the centre of Brno.

RegioJet buses leave from Prague's Václav Havel airport.



## By bus or car

Brno can be reached via motorways heading from Prague, Bratislava or Vienna.

There are several bus service operators on these routes. Some of the buses depart directly from the airports (see above). The connections can be found at [IDOS](#) or at the transportation companies' websites.

### From Prague

[RegioJet](#) buses leave from Prague's Václav Havel airport and from the Praha-Florenc bus station. All buses arrive to the Brno – Grand hotel bus station.

[FlixBus](#) operates buses from the Praha-Florence bus station only.

### From Vienna

[RegioJet](#) and [FlixBus](#) operate direct buses from Vienna's Schwechat airport and both of them stop at the Brno – Grand hotel bus station.

# Public transport

Once in Brno, you will probably want to get to the Hlavní nádraží tram station, which is located right in front of the main railway station. Take the **12 tram** to reach the Technological park tram stop, where the BUT campus and the largest BUT dormitory are situated.

The public transport system, which includes bus, tram and trolleybus lines, is excellent in Brno. Students are entitled to a reduced transport fare after submitting a student status certificate, issued by the [Brno Public Transport Authority](#) and confirmed by the BUT study department. You can apply for your non-transferable public transport ticket online, which we definitely recommend.

## Fares

15-minute ticket – CZK 20  
60-minute ticket – CZK 25  
90-minute ticket – CZK 27

All timetables can be found at [IDOS](#).

For more information about public transport and getting around Brno in general, visit [www.gotobrna.cz](http://www.gotobrna.cz).

Currently all public transport vehicles have a system “Beep & Go” which is contactless ticket purchase – no paper, no registration, no worries.





# Health insurance

## EU/EEA students (EU + Switzerland, Norway, Liechtenstein, Iceland)

Visit the General Health Insurance Company ("VZP" or "Všeobecná zdravotní pojišťovna" in Czech) to **register**. You'll get a personal **health insurance number**, which you'll show to doctors or in hospitals. The insurance covers most health care costs. If you don't register, you may be asked to pay for treatment in cash.

Check [this page](#) for more information.

**VZP branch in Brno**  
**General Health Insurance Company (VZP)**  
Benešova 10  
Brno

Opening hours

Mon, Wed:	8:00–17:00
Tue, Thu:	8:00–15:00
Fri:	8:00–14:00

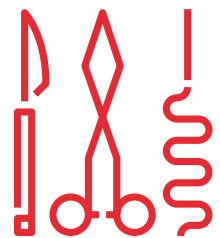
## Non-EU/EEA students

Other foreign students are advised to arrange health insurance before leaving their homes. Non-EU citizens are obliged to arrange a health insurance that complies with the Czech legislation. The following companies meet the legal requirements:

- [General Health Insurance Company](#)
- [MAXIMA](#)
- [SLAVIA](#)
- [UNIQUA](#)
- [ERGO](#)
- [Axa Assistance](#)

## Turkey, Croatia, Macedonia, Serbia and Montenegro

Students from these countries don't need the commercial insurance. They should register at the General Health Insurance Company (VZP) using form E111, provided by their home insurance company. Check [this page](#) for more information.



# Opening a bank account

Once you've settled in Brno, you'll probably want to open a bank account. The Czech Republic hosts several big national and international banks. You can thus choose from [Česká spořitelna](#), [ČSOB](#), [Komerční banka](#), [MONETA Money Bank](#), [Deutsche Bank](#), [Raiffeisenbank](#), and others. If you're looking for low fees and don't need any special services, consider one of the low-cost banks (such a [Equa](#), [Fio](#), [Air Bank](#) or [mBank](#)). Most banks provide internet banking services.

To open a bank account in the Czech Republic, you'll typically need

- a valid passport
- another identity document (your driver's license, identity card, birth certificate)
- a minimum deposit (usually between CZK 200 and CZK 2,000)
- a confirmation of studies or student visa

In some cases it is possible to open a bank account online, but you'll still need to drop by the bank in person with your identity documents and the minimum deposit to finalize the procedures.

Check [this page](#) to get more information.

## ATMs and cards

ATMs in the Czech Republic are compatible with Visa, EuroCard, MasterCard, Maestro, and American Express cards. You can select your preferred language.

Shops, international retailers, hotels and restaurants almost always accept card payments. Some small town restaurants and shops may prefer cash.

Mobile payments are becoming more and more popular in the country. The number of Google Pay and Apple Pay payments is increasing rapidly.

# Czech language courses

## Introduction to Czech language at BUT

This intensive 5-day Czech language course is intended for international exchange students coming to BUT. The course is a part of the [Welcome Week](#). Long term students can also attend our welcome week activities.

## Semester course of Czech language at BUT (winter 2022/2023)

You can attend a one-semester course of Czech language. Detailed information is available [here](#).

If you study at the Faculty of Mechanical Engineering, Faculty of Civil Engineering or Faculty of Electrical Engineering and Communication, choose a Czech course at your faculty.

## Lifelong Learning Institute at BUT

The institute offers an intensive course of Czech language for foreigners, designed for everybody who needs and wants to speak Czech.

There are usually 9–13 students in the class. You'll get 400 teaching hours (one semester course) or 560 teaching hours (two-semester course). A tuition fee is charged for this course. The participants have the status of a lifelong learning attendee only.

Contact person:  
Marcela Příkladová, [prikrylova@lli.vutbr.cz](mailto:prikrylova@lli.vutbr.cz)

Check [this page](#) for more contact information.

## Language schools in Brno

The [South Moravian Centre for the Integration of Foreigners](#) holds free [Czech language courses](#).

Private language schools that teach Czech include:

[Language Centre Correct](#)  
[Light Point - Language School](#)  
[Language school Pelican](#)  
[State Language School Brno](#)  
[Language school Hello](#)  
[Czech Courses Brno](#)





# Study at BUT





# Accommodation

## BUT residence halls

BUT offers its students accommodation in several residence halls, usually in single, twin and triple rooms. Half of the rooms are equipped with their own facilities. International students usually reside at the Pod Palackého vrchem campus, where the largest BUT residence hall is situated.

### Important note for students from 3rd countries

Students who apply for a Czech visa will also need an **accommodation contract** or **confirmation of a future contract** to submit to the embassy to be included in the visa process! Therefore, **you should communicate this necessity with the property owner as soon as possible** to receive your visa on time, thus before the beginning of the semester.

### Why choose BUT dorms

- Convenient locations
- Wide range of dining services (restaurants, canteens, pizzerias, cafés, snack bars) with modern cashless catering system
- Top-quality sports facilities
- Study rooms, laundry rooms with driers, bicycle storage rooms, copy services
- High-speed internet connection
- Student counselling centre
- Fair prices

### Pod Palackého vrchem Residence Hall price list

One bed in a twin room  
CZK 140 per night

One bed in a triple room with own facilities  
CZK 132 per night

Make sure to book a room in advance, i.e. before your arrival! Also keep in your mind you have to pay the advance payment total of € 350 no later than 14 days before the date of arrival given on your request.

When applying for a visa in the Czech Republic, it is necessary to provide proof of accommodation to Czech authorities.

Accommodation office contact  
+420 541 142 930-3, [ubytovatelky@skm.vutbr.cz](mailto:ubytovatelky@skm.vutbr.cz)





# Private accommodation

You can always rent a flat or house if you don't want to stay at a BUT dormitory. However, there are a few things you should know.

## Who to deal with

It's best to deal with a reputable agency. While individuals also can and do offer flats and houses to rent, problems may arise if you decide to rent from a private individual, particularly when it comes to obtaining proof of ownership (see below). Good agencies will make sure that the person leasing the flat is legally entitled to do so and that the lease contract contains all the necessary and standard provisions. The usual fee charged by an agency is equivalent to one month's rent.

## Lease contract

You should, of course, understand exactly what you're signing. Any agency accustomed to dealing with foreigners should be able to provide you with a lease contract in both English and Czech (the latter having legal force should there be any question as to interpretation). Many can also supply versions in other major languages.

## Ownership of the property

Ownership of the property you wish to rent must be proven through an extract from the property register. This document is important because only the owner (or an individual with power of attorney to represent the owner) can lease a flat or house. However, many flats in the Czech Republic are in fact owned by local authorities, and it is illegal to sublet these flats. Only an extract from the property register can give you the confidence that you are renting the flat legally.

## Rent and security deposit

Rent is usually paid monthly, in advance. Rents may be quoted in one of two ways. The first is the basic rent for the flat/house alone plus the cost of the utilities (electricity, water, gas), which come separately. The second is an overall rent inclusive of the utilities. When a particular rent is quoted, you should make sure which of these two systems it works with. If the utilities are calculated separately, their approximate cost per month is then added to this basic rent to make up the rent you will actually pay each month (this will be stated in the lease contract). Once a year the landlord will calculate your real consumption of electricity, water and gas; depending on the results, you will either receive a refund or be required to pay an additional sum to make up the difference. Usually the lease also includes a security deposit, in most cases equal to one month's rent. This is paid at the beginning of the lease and kept by the landlord to be returned at the end of the lease, unless damage has been

caused to the property. In this case, the landlord can retain part or all of the security deposit to cover the damage.

## Hand-over record

The lease, or (more often) a record attached to it, may contain a description of the condition of the flat, its equipment, readings of the utility metres, etc. The latter in particular is important. You should check that the figures listed for the metres correspond to the actual readings; otherwise, you might be in for a big surprise when the annual statement of your consumption of electricity, water and gas comes in. The same is true of the description of the flat; you do not want to be held responsible for damage that was actually caused before you started renting the place, or be accused of having made off with something that was not there in the first place.

## Duration of the lease

Most leases are signed for a period of one year. They may have a clause allowing the lease to be terminated early, in which case the notice period can vary from one to three months. Otherwise, Czech law states that in cases where you wish to terminate the lease early (or where no termination date has been specified, though this is uncommon, especially in leases for foreigners), you must give three months' notice.

## Watch out

The Civil Code allows verbal contracts, which you can make use of to deal with certain matters faster (in case your landlord is away and you need to make some changes). This part of your contract should be added to the written one as soon as possible. But even if this is not the case, verbal contract is binding in same way as a written one.

## Private accommodation links

[Foreigners](#)  
[Flat Rent Brno forStudents](#)  
[SReality](#)  
[Flats in Brno](#)

## Waste collection fee

Every student who wants to stay in Brno for more than 3 months should pay a waste collection fee. Check [this page](#) for more information.





# Scholarships and financial aid

## Accommodation grant

An accommodation grant is awarded to full-time students whose permanent address is not registered in the district of Brno. The exact amount is determined by the rector.

The accommodation grant is approximately EUR 23 per month.

Students can apply for the grant via StudIS in the [Scholarships and Charges](#) section. The grant can only be sent to a CZK bank account.

## Other types of scholarship

BUT grants [scholarships](#) for outstanding study results, for the support of doctoral students and in some exceptional cases.

And there are [other scholarship opportunities for international students in the Czech Republic you might want to check out.](#)





# Student cards



## ISIC

You should obtain your International Student Identity Card (ISIC) at your home university or in your home country.

ISIC will allow you to benefit from student discounts on things like public transport passes, museum or theatre tickets, bus, rail and air fares.

If for some reason you're unable get your ISIC before coming to BUT, you can apply for it at Student Agency, Náměstí Svobody 1, Brno. You'll need to pay CZK 350 and bring a confirmation of studies, which you'll get from your faculty coordinator. All information about BUT cards for students can be found [here](#).



## ESNcard

The ESNcard is the membership card of the [Erasmus Student Network](#).

It gives you access to all the services offered by ESN and all its partners.

It is valid for 12 months and can be used by the card holder only.

You can get your card at the ESN VUT office (the Faculty of Business and Management, Kolejní street, room no. P223.) any time during opening hours.



## BUT student identity card

Once enrolled at our university, you'll get a student identity card with a special BUT chip.

This card will serve as your identification card at BUT. It will give you access to computer rooms, libraries and other university facilities.

You can benefit from student discounts at student canteens, public transport, etc.

If you want the card to be ready before your arrival, send your date of birth and a passport-size photo to your faculty foreign department.

As a BUT student, you are entitled to several types of student cards, which can be used not only to enter university buildings, but also thanks to them you can get many interesting discounts and benefits to many restaurants, sports facilities, sightseeings, various events or libraries.



# Student associations

## ESN VUT Brno

- The BUT branch of the Erasmus Student Network
- Organizes mainly free time activities for international students at BUT
- Contact: [info@but.esnbrno.cz](mailto:info@but.esnbrno.cz)

## BEST Brno

- The Brno branch of the BEST international organization, which gives BUT students a chance to participate in short-term academic courses, training internships and the EBEC competition
- Contact: [brno@best.eu.org](mailto:brno@best.eu.org)

## IAESTE

- The Czech branch of the International Association for the Exchange of Students for Technical Experience offers an array of exchange programs for technical students looking to intern outside the Czech Republic and companies looking for international technical trainees.
- Contact: [brno@iaeste.cz](mailto:brno@iaeste.cz)

## Student chamber of the Academic Senate

- Represents students in the Academic Senate of BUT
- The Student chamber has two main groups: one organizes free-time activities and the other is the students' point of contact with BUT dormitories and dining services
- Contact: [skas@vutbr.cz](mailto:skas@vutbr.cz)

## Student chamber of the Council of Universities of the Czech Republic

- A general representative of BUT students in the Czech Republic and a member of the Council of Universities of the Czech Republic
- Represents students when dealing with municipalities and international organizations
- A member of ESIB (National Union of Students in Europe)
- Involved in virtually all affairs related to universities
- A partner of the Czech Ministry of Education, Youth and Sports
- Contact: [skrvs@skrvs.cz](mailto:skrvs@skrvs.cz)

# Student with special needs

UT has a special support and counselling centre called **Alfons** for students with any kind of disabilities.

If you need help concerning special needs, don't hesitate to contact the centre. They speak English and are ready to help you and make your stay in Brno as comfortable as possible.

More information can be found at the [website of the centre](#).



# International Student Ambassadors

International Student Ambassadors are current students who connect the university and the outside community. They use their own unique experience to introduce people interested in university life to what it's like to be a student at BUT.

Check [this page](#) to learn more about student ambassadors.

Vincent Bediako Oti

**Ghana**  
Faculty of Mechanical Engineering / Applied Science in Engineering  
[ghana@vut.cz](mailto:ghana@vut.cz)

Nelson Mutua

**Kenya**  
Faculty of Information Technology / Computer Science and Engineering  
[kenya@vut.cz](mailto:kenya@vut.cz)

Jorge Andres Navarro Giraldo

**Colombia**  
CEITEC BUT / Advanced Materials and Nanosciences  
[colombia@vut.cz](mailto:colombia@vut.cz)

Nashwa Atroosh

**Yemen**  
Faculty of Civil Engineering BUT / Building Construction  
[yemen@vut.cz](mailto:yemen@vut.cz)

Cristovao Matias Pedro Cristovao

**Angola**  
Faculty of Electrical Engineering and Communication BUT / Telecommunication and Information Systems  
[angola@vut.cz](mailto:angola@vut.cz)

Raul Aghayev

**Azerbaijan**  
Faculty of Information Technology BUT / Information Technology  
[azerbaijan@vut.cz](mailto:azerbaijan@vut.cz)

Aida Fazlić

**Bosnia and Herzegovina**  
Faculty of Mechanical Engineering BUT / Mechatronics  
[bosniaandherzegovina@vut.cz](mailto:bosniaandherzegovina@vut.cz)

Evans Liyambo

**Zambia**  
Faculty of Electrical Engineering and Communication BUT / Telecommunications  
[zambia@vut.cz](mailto:zambia@vut.cz)

Ghait Ashqar

**Palestine**  
Faculty of Mechanical Engineering BUT / Fundamentals of Mechanical Engineering  
[palestina@vut.cz](mailto:palestina@vut.cz)

Raul Aghayev

**Azerbaijan**  
Faculty of Information Technology BUT / Information Technology  
[azerbaijan@vut.cz](mailto:azerbaijan@vut.cz)

Risha Rufaqua

**Bangladesh**  
Faculty of Mechanical Engineering BUT / Design and Process Engineering  
[bangladesh@vut.cz](mailto:bangladesh@vut.cz)

Valli Kamala Laxmi

**Ramya Chittoory**  
**India**  
CEITEC BUT / Advanced Materials  
[india@vut.cz](mailto:india@vut.cz)

Victoria Harea

**Moldova**  
Faculty of Business and Management BUT / Entrepreneurship and Small Business Development  
[moldova@vut.cz](mailto:moldova@vut.cz)

Victory Jaques

**Switzerland**  
CEITEC BUT / Advanced Nanotechnology and Microtechnology  
[switzerland@vut.cz](mailto:switzerland@vut.cz)

You Li

**China**  
Faculty of Information Technology BUT / Computer Graphics and Multimedia in English  
[china@vut.cz](mailto:china@vut.cz)

Mohammed Ali Shehadeh

**Syria**  
Faculty of Mechanical Engineering BUT / Design and Process Engineering  
[syria@vut.cz](mailto:syria@vut.cz)



# → Life in Brno





# City of Brno

With the population of over 380,000 inhabitants, Brno is the second largest city in the Czech Republic. It's also very popular with students. According to QS (a company behind university rankings), Brno is the **6th most popular student city worldwide**. Students generally appreciate its safety, tolerance, ease of getting around, affordability, and also a large and friendly student community.

## One in five is a student

There are almost 19,000 students at BUT. In total, 80,000 students from 13 universities live in Brno. This means one in five is a student.

Every year from October to May, Brno buzzes like a huge student hive. You will love the energy. Brno truly is a Mecca for students, and the vibrating atmosphere simply must be experienced in person.

## Bored in Brno? Not a chance!

You might skip some lectures, but you definitely won't get bored. Concerts, theatres, festivals, exhibitions, parties, pubs, cafés...

The clubbing season kicks off in autumn. In winter, hot drinks at Christmas markets will keep you warm; if you fancy hot apple juice enriched with absinthe, ask for "Turbomošt". And once spring starts, everybody meets at the St. James Square ("Jakubák") to grab a beer, sit outside, talk with friends and admire the beautiful late Gothic Church of St. James.

## Unique architecture. And nature all around

Some people fly from Japan just to visit the UNESCO-enlisted **Villa Tugendhat**, and you will be able to see it every day! Designed by the architect Mies van der Rohe, it is the most important modernist building in the whole

country. The Brno Exhibition Centre, built in 1928, is another (but definitely not the last) great example of Brno's modernist heritage.

And the best part is, you can get anywhere **within half an hour by tram**. And if you hop on your bicycle, you will find beautiful nature all around!

## Inside research and innovation

Brno is a real blessing for BUT students. Why? Because **world-class research centres** – such as CEITEC or Materials Research Centre – reside here.

But that's not all. There are other top-notch laboratories in the research centres established by our faculties, where students can join research activities as early as in the second year of their studies.

## South Moravia

Brno is also the capital of the South Moravian Region. Of the 12 architectonic sights in the Czech Republic that are listed in the prestigious **UNESCO** World Heritage List, two are located in South Moravia. The first one, Villa Tugendhat, has already been mentioned. The second one is the **Lednice-Valtice Cultural Landscape**, one of the largest artificial landscapes in Europe. In addition to being the place of residence for the Liechtenstein family, it features various structures around Lednice and Valtice, such as chapels, colonnades, artificial ruins and an arch of triumph. UNESCO sights also include two **biosphere reserves**, Lower Moravia and

the White Carpathians, as well as two sights of intangible **cultural heritage**, the Moravian-Slovakian dance called "verbuňk" and the Ride of the Kings.

## Useful links

There are two excellent websites focusing on Brno:

- Brno Expat Centre helps foreign professionals settle and live in the city, and [their website](#) contains tons of useful information, covering pretty much all aspects of life and work in Brno.
- [Go to Brno](#) is a website created by Brno's Tourist Information Centre to help both locals and visitors experience what Brno has to offer, including architecture, culture, sports, gastronomy, night life and various events.



# Cost of living in Brno

In general, the cost of living in the Czech Republic is lower than in the old EU member countries, and this applies to Brno too. Which means you'll be able to live comfortably without spending large sums.

The official currency of the Czech Republic is the Czech koruna. The approximate conversion rate is CZK 25 / EUR 1 (or CZK 100 / EUR 3.80 EUR). Although Euro is occasionally accepted by some restaurants, hotels and shops, the Czech koruna is generally the only currency that can be used. However, most supermarkets, shops, restaurants and institutions accept payment cards. And there are many ATMs in Brno, especially in the city centre, but you'll find them on the campus too.



## Average prices

Student residence halls (per month)  
4200 CZK / 170 EUR

Room in a flat (per month)  
from CZK 6000 / 245 EUR

Public transport in Brno (per month)  
CZK 275 / EUR 10

Lunch at a university canteen  
from CZK 55 / EUR 2

Dinner at a restaurant  
from CZK 140 / 5,7 EUR

Pizza at a restaurant  
from 140 CZK / 5,7 EUR

Beer at a pub  
from CZK 40 / 1,6 EUR

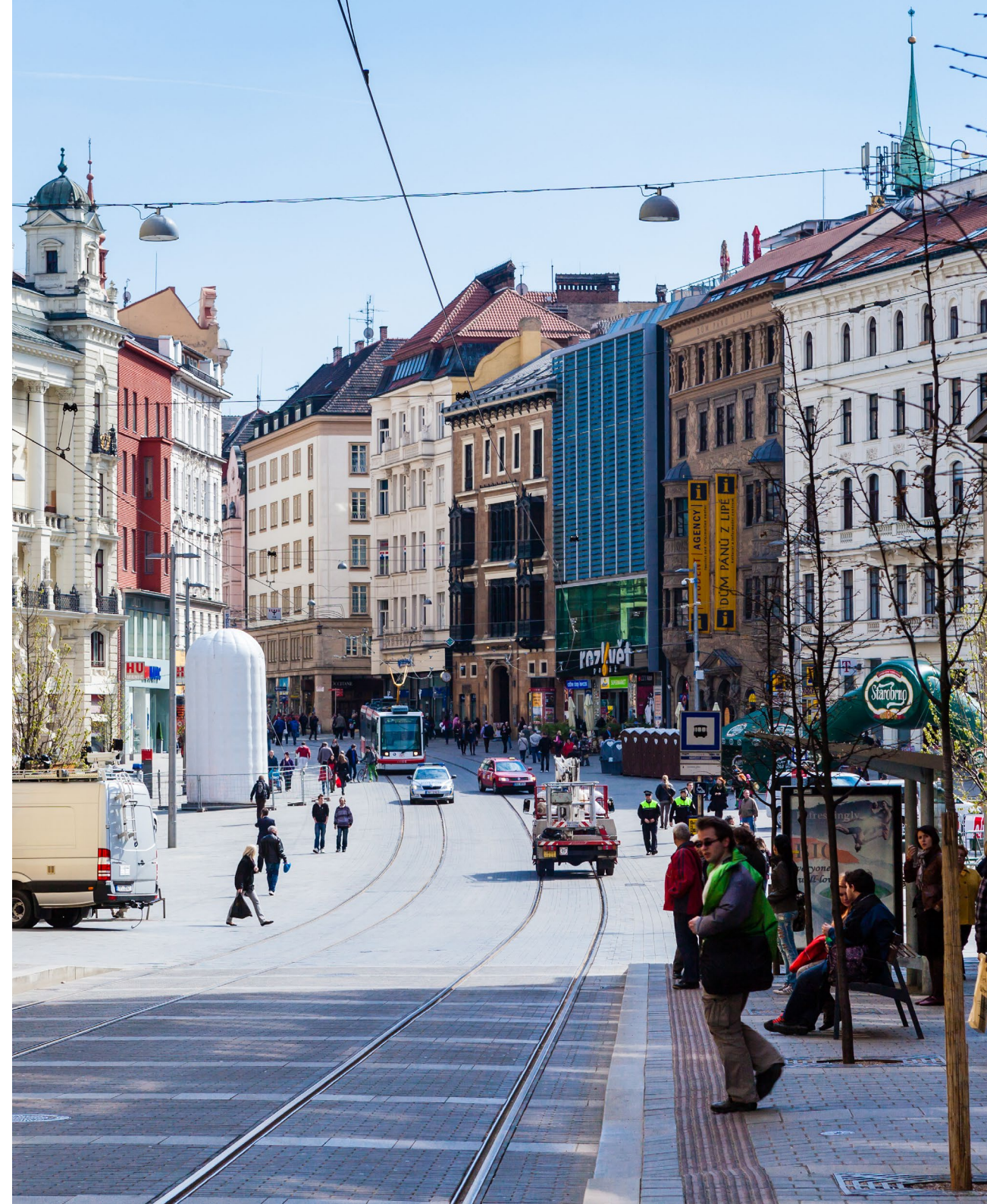
Loaf of bread  
from CZK 40 / 1,6 EUR

1 l of milk  
25 CZK / 1 EUR

Yoghurt  
CZK 14 / EUR 0.50

1 kg of potatoes  
CZK 25 / EUR 0.90

Cinema ticket  
from CZK 175 / EUR 6.70





# Work in Brno during studies

Beginning from the first year of study, students in Czech universities have the right to officially work **20 hours a week**. Many students work and study at the same time, and having a part-time job is common in the Czech Republic. There are working options for international students too, just keep in mind that the job offer may be limited because most jobs require fluency in the Czech language. However, there are many international companies operating in Brno where your ability to speak or understand a foreign language can be an advantage.

## Non-EU/EEA citizens

If you're a non-EU/EEA citizen, you are allowed to work while studying, just remember that you're staying in the Czech Republic with a student visa, which means paid work cannot be your primary occupation and work should not affect your studies.

If you study a standard accredited degree programme, you **don't need an employment permit**. The employer is only obliged to notify the relevant regional office of the Public Employment Service when you start working.

If you finish your studies at a Czech university and wish to stay in the Czech Republic to work here, you can do it quite easily. You'll have to apply for an **employee card**, but since foreign nationals who get their university education in the Czech Republic have free access to the labour market, the employee card basically serves as a long-term residence permit.

## Salary

Minimum gross salary (full-time job)  
EUR 575 per month / 3,4 EUR per hour (in 2022)

Average gross salary (full-time job)  
EUR 1547 per month (in 2022)

Part-time jobs:  
around EUR 5.5 per hour



Published by Brno University of Technology in 2023  
Editors: Odbor zahraničních vztahů, Rektorát VUT v Brně  
[www.vutbr.cz](http://www.vutbr.cz)